

Svi modeli signal generatora Saluki Incorporation :

S1131 RF Signal Generator (100KHz - 3GHz)

Saluki S1131 RF signal generator obezbeđuje inženjerima "Manje, lakše i cenovno povoljnije" rešenje za 3GHz aplikacije za generisanje signala. Iako je instrument ulaznog nivoa, S1131 pruža najčešće korišćene funkcije koje inženjer treba, kao što su generisanje CV signala, AM / FM / PM / Pulse modulacija, digitalna modulacija (ASK, FSK, PSK), Up-pretvaranje, LF izlaz itd. .



S1131 podržava SCPI tako da je lako napraviti sopstvene programe za daljinsko upravljanje. Takođe je vrlo pogodna i atraktivna cena za korišćenje na obrazovnom tržištu. Ključne karakteristike

Pokrivenost frekvencije od 100 kHz do 3 GHz Odlične specifikacije AM, FM, PM, funkcija pulse modulacije ASK, FSK, PSK modulaciona funkcija Mala veličina, mala težina Prijatan korisnički interfejs, jednostavan

za korišćenje Aplikacije obrazovanje RF komponenta R & D proizvodnja, održavanje



SALUKI TECHNOLOGY

S1131 RF Signal Generator

R&D
Most of the time, engineers may only need a simple but reliable signal source. S1131 is perfect for this.

Manufacturing
S1131 provides factories a simple and very cost effective solution for testing and debugging. It provides multi functions in a small box to handle variety kinds of test requirements.

Education
Student can benefit a lot from hands-on RF experiments. S1131 provides basic functions including CW, analog modulation, pulse modulation, digital modulation etc. meanwhile affordable price obviously reduces the cost to build such a lab.

Abundant Functions

- 100kHz–3GHz
- Analog modulation, AM, FM, PM
- Pulse Modulation
- Digital Modulation, 2ASK, 2,4,8 FSK, 2,4,8PSK
- IF input
- LF Output
- Step, List Sweep
- SCPI Programming

Small size, good looking

4 main function keys

IF input for upconverting

Low frequency output

100kHz-3GHz Output

Protection Bumpers

Support/handle

LAN/USB for Remote Control

Friendly UI

Technical Specifications

Specifications	
Frequency Range	100 kHz - 3 GHz
Sweep Modes	Step Sweep / List Sweep
Output Power Range	-120 dBm - 10 dBm
Output Power Resolution	0.01 dB
Power Accuracy	+10 dBm to -80 dBm: $\leq \pm 0.5 \text{ dB}$ -80 dBm to -120 dBm: $\leq \pm 1 \text{ dB}$

VSWR	<1.8		
SSB Phase Noise (dBc/Hz)	Carrier Frequency Offset	10 kHz	100 kHz
	f = 300MHz	-100 dBc/Hz	-115 dBc/Hz
	f = 1GHz	-90 dBc/Hz	-105 dBc/Hz
Harmonic	<-30 dBc (typ.)		
Non-Harmonic	<-50 dBc (typ.)		
Analog Modulation Functions	AM,FM,PM,Pulse		

General Information

General	
RF Output Interface	N type 50 Ω
Telecommunication Interfaces	USB, LAN
Dimension	340× 230×110 mm
Weight	<5 kg
Operating Temp.	0 - +45 °C
Power Supply	110 - 240V 50/60 Hz AC

S1101 Serija RF Signal Generator (do 6GHz)

Serijski RF signal generator serije S1101 obuhvata frekvencijski opseg od 250 kHz do 6 GHz / 3 GHz. Ključne karakteristike Frekventni opseg: 250 kHz - 6 GHz / 3 GHz. Izuzetno niska fazna buka. Izlazna snaga od -135 dBm do +7 dBm. Analogni i digitalni modulacijski signali.



Spisak i koraka.

Aplikacije

Razvoj potrošačke elektronike

Proizvodnja Održavanje usluge Obrazovanje o RF

Serijski RF signal generator serije S1101 obuhvata frekvencijski opseg od 250 kHz do 6 GHz / 3 GHz.

S1101 pruža izuzetno niske fazne buke,

rezoluciju tačnosti frekvencije,

širok dinamički opseg izlaznih podataka i više ugrađenih funkcija.

široko se koristi za R & D, obrazovanje,

elektronski uređaj

Technicke informacije uređaja

Frekvencijski opseg	
S1101A	250 kHz - 6 GHz
S1101B	250 kHz - 3 GHz
N Faktor	
250 kHz \leq f \leq 250 MHz	1
250 MHz $<$ f \leq 500 MHz	0.5
500 MHz $<$ f \leq 1 GHz	1
1 GHz $<$ f \leq 2 GHz	2
2 GHz $<$ f \leq 3.2 GHz	4
3.2 GHz $<$ f \leq 6 GHz	8
Frekvencija rezolucija	
0.01 Hz	
Harmonik	
$<$ -30 dBc	
Sub-harmonik	
None	

General Information

Dimenzije (W×H×L)	482×152×582 mm
Max. težina	oko. 23 kg
Potosnja el.energije	300 W (Max)

Ac napajanje

220 VAC

S1103 serije sinteznih generatora signala (do 67GHz)

PrevNekt Saluki S1103 serija je sintetizovani generatori čišćenja sa frekvencijom do 67GHz i vrhunskim performansama. Integrisana sa dvokanalnim internim modulacijama sintetizovanim generatorom oscilovanja i pulznim generatorom, S1103 može takođe obezbediti AM, FM, ØM i impulsno modulirane signale. Ključne karakteristike Širok frekventni opseg. Visok kvalitet. Niskog faznog zvučnog signala. Visoki dinamički opseg. Precizna snaga Kompatibilan sa Ektender frekvencijom serije SAV82406 da produži izlaznu frekvenciju do 500 GHz Aplikacije Zamena lokalnog oscilatora Testiranje na prijemnicima visokih performansi Sveobuhvatna evaluacija performansi elektroničkog sistema



SALUKI
TECHNOLOGY

S1131 RF Signal Generator

R&D
Most of the time, engineers may only need a simple but reliable signal source. S1131 is perfect for this.

Manufacturing
S1131 provides factories a simple and very cost effective solution for testing and debugging. It provides multi functions in a small box to handle variety kinds of test requirements.

Education
Student can benefit a lot from hands-on RF experiments. S1131 provides basic functions including CW, analog modulation, pulse modulation, digital modulation etc. meanwhile affordable price obviously reduces the cost to build such a lab.

Abundant Functions

- 100kHz—3GHz
- Analog modulation, AM, FM, PM
- Pulse Modulation
- Digital Modulation, 2ASK, 2,4,8 FSK, 2,4,8PSK
- IF input
- LF Output
- Step, List Sweep
- SCPI Programming

Small size, good looking

4 main function keys

IF input for upconverting

Low frequency output

100kHz-3GHz Output

Protection Bumpers

Support/handle

LAN/USB for Remote Control

Friendly UI

Technical Specifications

Specifications				
	S1103A	S1103B	S1103C	S1103D
Frequency Range	250 kHz - 20 GHz	250 kHz - 40 GHz	250 kHz - 50 GHz	250 kHz - 67 GHz
Frequency Resolution	0.001Hz			
Output Power	-20 dBm - +13 dBm	-20 dBm - +10 dBm	-20 dBm - +6 dBm	-20 dBm - +6 dBm
Output Power with Programmable step attenuator (Optional)	-120 dBm - +11 dBm	-120 dBm - +8 dBm	-90 dBm - +3 dBm	-90 dBm - +3 dBm
Single Sideband Phase Noise @ 1 GHz(10 kHz offset)	-130 dBc/Hz	-130 dBc/Hz	-130 dBc/Hz	-130 dBc/Hz

General Information

Dimension	Standard: 426×133×510mm (without handles, feed pad and feed)
	Max. 482×152×582mm
Weight	Approx. 20 Kg
Operating Temp.	0- +40 °C
Max.Power	300 W
Power Supply	220 VAC

SAV102 NB-IoT modularni signal generator (6GHz)

SAV102 modularni generator signala je generator visokih performansi vektorskih signala. Podržava proizvoljan talasni signal, signal kontinualnog talasa, uobičajeni vektorski signal, simulaciju i digitalnu modulaciju, standardni bežični vektorski signal, standardni radio signal i prilagođeni signal.



Key Features

- Frequency Range:10MHz - 6GHz.
- Multiple telecommunication signal / NB-IoT signal.
- Small size, low weight, universal interface, easy to integrate into a test system

Applications

- NB-IoT tests
- Network optimization test
- Telecommunication receiver test

Custom Digital Modulation



State

Off

Set To Default

Save/Recall...

Generate Waveform File...

Sequence Length

1000

Symbols

Data Source

Data Source

ALL 1

Select Control List...

None

List Management...

Symbol Rate

270.833333

ksym/s

Modulation

Modulation Type

QPSK

Filter

Filter

Root Cosine

Impulse Length Auto

10

Oversampling Auto

16

Roll Off Factor

0.35

More...

State

Off

Set To Default

Save/Recall...

Data List Management...

Generate Waveform File...

3GPP Version 3GPP 36.211 V8.7.0(June 09 Baseline)

Duplexing TDD LTE

Link Direction Downlink(OFDMA)

Sequence Length 1 Frames

Test Setups/Models...

General DL Settings...

Frame Configuration...

Filter/Clipping/Power...

Marker...

LTE / Clip Off

State

Off

LoRa Baseband Data Generator (waveform)

SF Mode

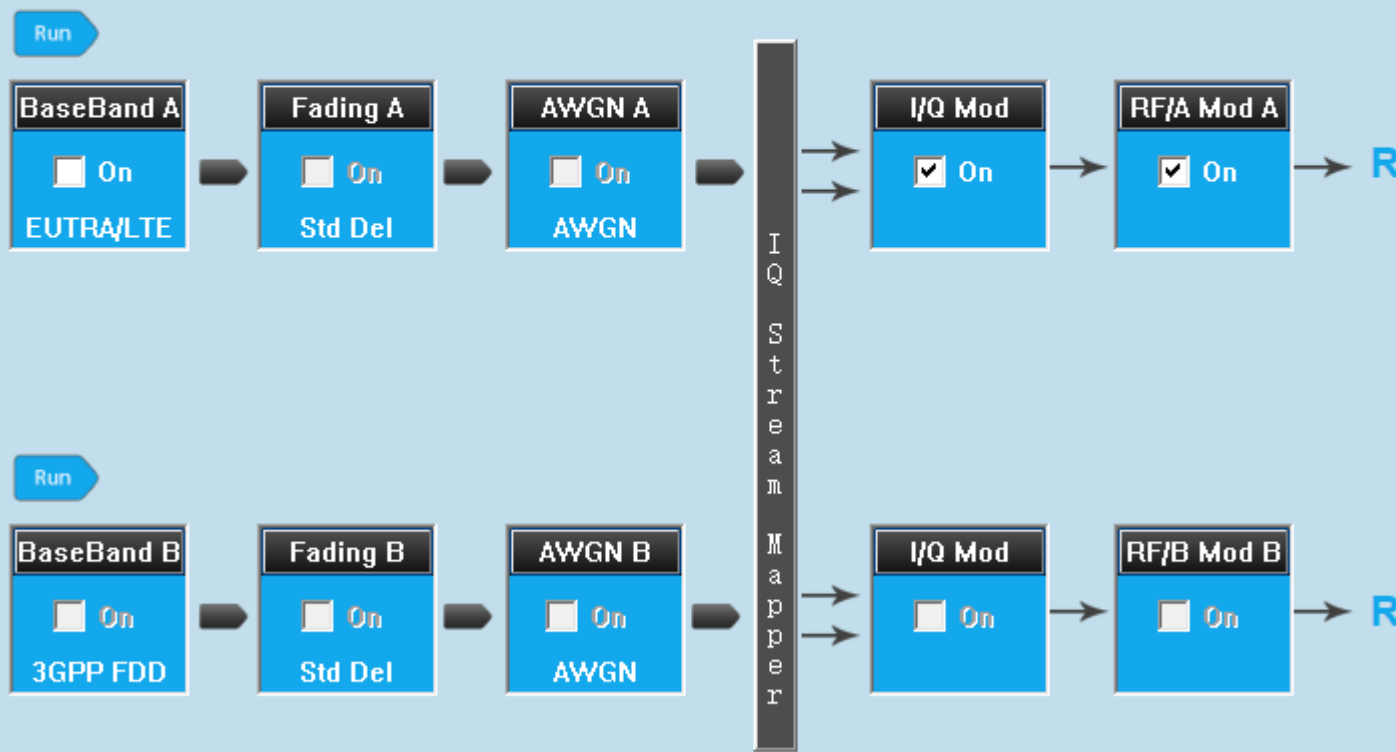
- frameSF8PL10CR2
- frameSF8PL10CR2
- frameSF9PL10CR2
- frameSF10PL10CR2
- frameSF11PL10CR2

SignalGenerator

File Baseband Transmission Grapics Help

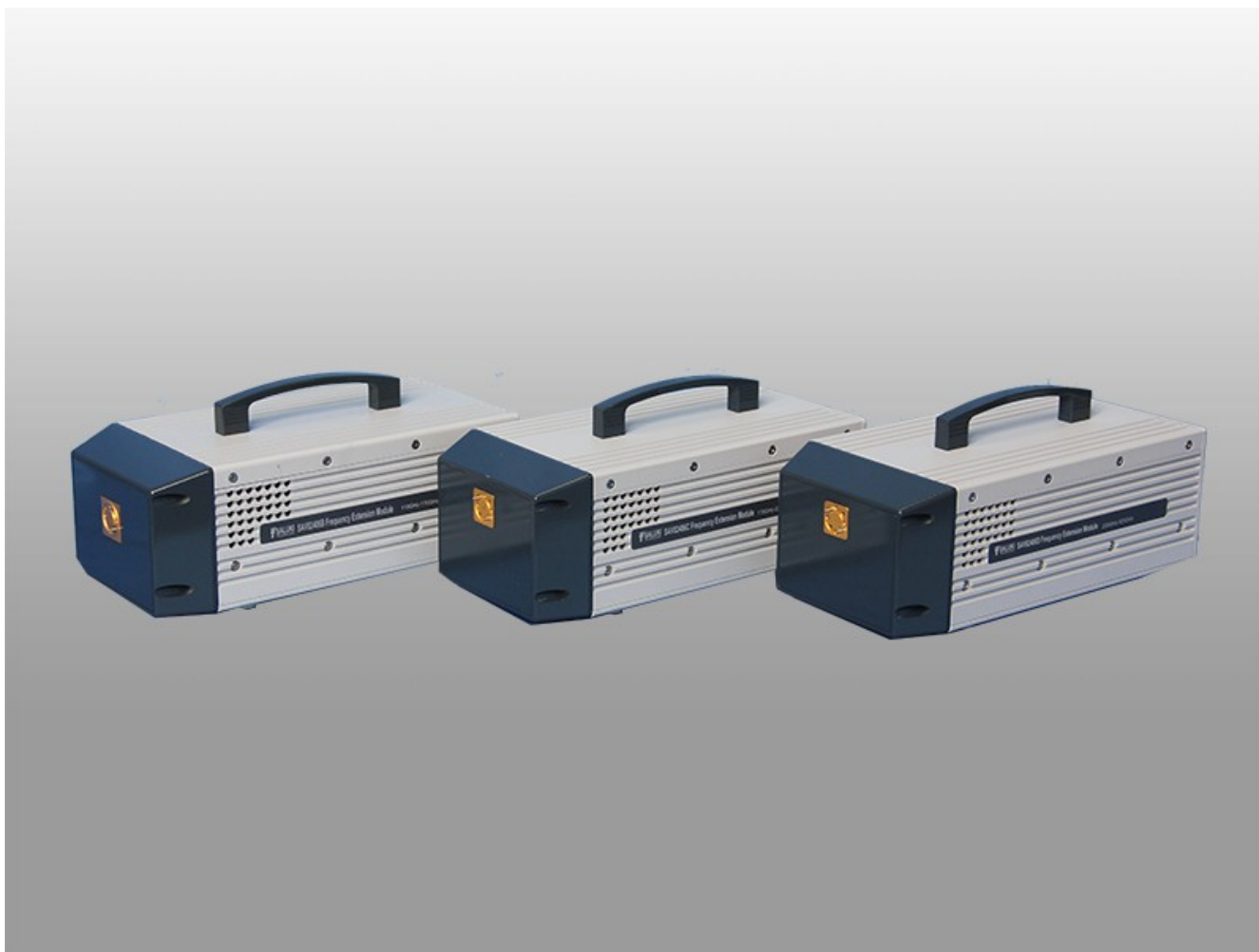
A Freq GHz RF On Mod On PEP dBm Lev dBm

B Freq GHz RF On Mod On PEP dBm Lev dBm



SAV102 modularni generator signala je generator visokih performansi vektorskih signala. (do 500GHz)

Podržava proizvoljan talasni signal, signal kontinualnog talasa, uobičajeni vektorski signal, simulaciju i digitalnu modulaciju, standardni bežični vektorski signal, standardni radio signal i prilagođeni signal. SAV102 modularni signal signala primjenjuje se za obrazovne prakse, bežični monitoring, mobilnu komunikaciju, vazduhoplovnu i nacionalnu odbrambenu industriju u smislu istraživanja, proizvodnje, testiranja i merenja i elektronskog kontramera. SAV102 generator signala zadovoljava većinu prakse simulacije signala i pod uslovom da korisnik nastavlja usluge prilagođavanja. SAV102 obezbeđuje modulacijske funkcije signala 2G / 3G, 4G i NB-IoT u frekvencijskom opsegu od 10 MHz do 6 GHz. Sa USB 3.1 interfejsom tipa C i VISA podrškom, povezivanje podataka je lako.



Technical Specifications

Specifications	
Frequency Range	10 MHz - 6 GHz
Frequency Stability	±1 ppm
Frequency Resolution	1 Hz
Output Power Range	-110 dBm - +10 dBm
Output Power Resolution	0.1 dB
Output Power Accuracy	±0.5 dB
Harmonics	≤-30 dBc; Non-harmonic <-55 dBc
Phase Noise	≤100 dBc / Hz @ 10 KHz
SWR	≤1.5:1
Vector Modulation Signal	BPSK, QPSK, OQPSK, 8PSK, MSK, FSK, 16QAM, 32QAM, 64QAM
Telecommunication Standard	GSM / EDGE / CDMA / TD-SCDMA / WCDMA / CDMA2k / TD-LTE / FDD-LTE / NB-IoT / LoRa
EVM	≤3%rms
Modulation Mode	I / Q, pulsewidth I / Q modulation bandwidth: 20MHz I / Q modulation depth: 4G bits Pulsewidth: 100 ns - 1s, repetition rate: 1 Hz - 10 MHz

General Information

Power supply	5 V 1.5 ADC
Interfaces	USB3.1 TYPE-C (VISA supported)
Dimension	190 x 93 x 32(mm)

SAV102-01	GSM
SAV102-02	WCDMA
SAV102-03	FDD-LTE
SAV102-04	TDD-LTE
SAV102-05	NB-IoT
SAV102-06	LoRa

SAV82406 SG Ektension Module (do 500GHz)

Modul za proširenje generatora signala serije SAV82406 je nova generacija milimetarskog talasnog ekstendera.

Ključne karakteristike Frekventni opseg: 50 GHz - 500 GHz.

Zahtevi frekvencije ulaznog signala: <20 GHz. Napajanje: uključen je 15 VDC adaptera Kompaktna, lagana, niska potrošnja energije, standardni interfejs Ugrađeni mikrotalasni pojačavač visokog stepena; ulazni signal niskog nivoa je prihvatljiv. Aplikacije Generator signala za radarski test milimetarskih talasa
Generator signala za komunikaciju milimetarskih talasa

Technical Specifications

Frequency Range	
SAV82406A	50 GHz - 75 GHz
SAV82406B	75 GHz - 110 GHz
SAV82406C	110 GHz - 170 GHz
SAV82406D	170 GHz - 220 GHz
SAV82406E	220 GHz - 325 GHz
SAV82406F	325 GHz - 500 GHz
Multiplication Factor	
SAV82406A	4
SAV82406B	6
SAV82406C	12

SAV82406D	12
SAV82406E	18
SAV82406F	36
Output Power	
SAV82406A	+13 dBm
SAV82406B	+10 dBm
SAV82406C	+2 dBm
SAV82406D	-2 dBm
SAV82406E	-8 dBm
SAV82406F	-18 dBm
RF Signal Input Connector	
3.5mm Female	
RF Signal Output Connector	
SAV82406A	WR15
SAV82406B	WR10
SAV82406C	WR6.5
SAV82406D	WR5.1
SAV82406E	WR3.4
SAV82406F	WR2.2

General Information

Power Supply	15V-18 V DC
Power Consumption	<20 W
Dimension (L×H×W)	240 ×120 ×85 mm

Uvoznik:

Melco Buda d.o.o.

tel: +065 8003370 ,063 8003370 ; 011 / 627-74-10 / 065 3119422,

www.melcobuda.co.rs, www.kyoritsu-instrumenti.com, www.termovizija.com .

[e mail office@melcobuda.co.rs](mailto:office@melcobuda.co.rs)